



**GLEDHOW GARDENS | PRIME SOUTH KENSINGTON SW5  
FOURTH FLOOR • TWO DOUBLE BEDROOMS • SHARE OF FREEHOLD • VIEWS &  
ACCESS TO TWO PRIVATE COMMUNAL GARDEN SQUARES**

# COMMANDING VIEWS OVER TWO PRIVATE GARDEN SQUARES

## COMMANDING VIEWS OVER TWO PRIVATE GARDEN SQUARES

Enjoying commanding views over both Gledhow Gardens and Bina Gardens West, together with the rare privilege of exclusive access to two private communal garden squares, this elegant fourth-floor apartment offers approximately 740 sq ft of beautifully balanced accommodation in one of South Kensington's most sought-after addresses.

Impressive three-metre ceilings and abundant natural light create an exceptional sense of space throughout, while the contemporary marble kitchen with roof lights, generous reception room and two spacious double bedrooms combine to create an exceptional London home, pied-à-terre or investment. Beautifully presented throughout and ready for immediate occupation, the apartment offers a rare combination of elegant interiors, outstanding private garden access and one of Prime Central London's most desirable garden square settings. Please note that images may include virtual staging for illustrative purposes.





## ACCOMMODATION

Entrance hall leading to a bright reception and dining room with impressive three-metre ceilings and commanding views over Gledhow Gardens and Bina Gardens West. Contemporary marble kitchen with roof lights, two generous double bedrooms and a modern family bathroom. Exclusive access to two private communal garden squares.

## LOCATION

Set within South Kensington's prestigious garden square district, Gledhow Gardens enjoys a peaceful setting moments from Old Brompton Road, Fulham Road and Gloucester Road. Residents benefit from exclusive access to two private garden squares, while Gloucester Road, South Kensington and Earl's Court stations provide excellent connections across London and to Heathrow.



A rare outlook with exclusive access to two of South Kensington's most beautiful private communal garden squares.

## PROPERTY INFORMATION

**Property Type:** Flat/Apartment

**Construction Materials:** Brick

### Utilities:

Electricity supply: Mains Supply

Water supply: Mains

Sewerage: Mains

Heating: Gas Mains

**Broadband/Internet connection:** Fttc

**Mobile Signal Coverage:** Please check Ofcom

Mobile Checker

**Broadband speed:** Please check Ofcom

Broadband Checker

**Parking Arrangements:** Street Parking Permit  
Required

## Terms

**Guide Price:** £1,100,000

**Tenure:** Share of freehold

**Lease:** Long lease

**Service Charge:** TBC

**Ground Rent:** n/a

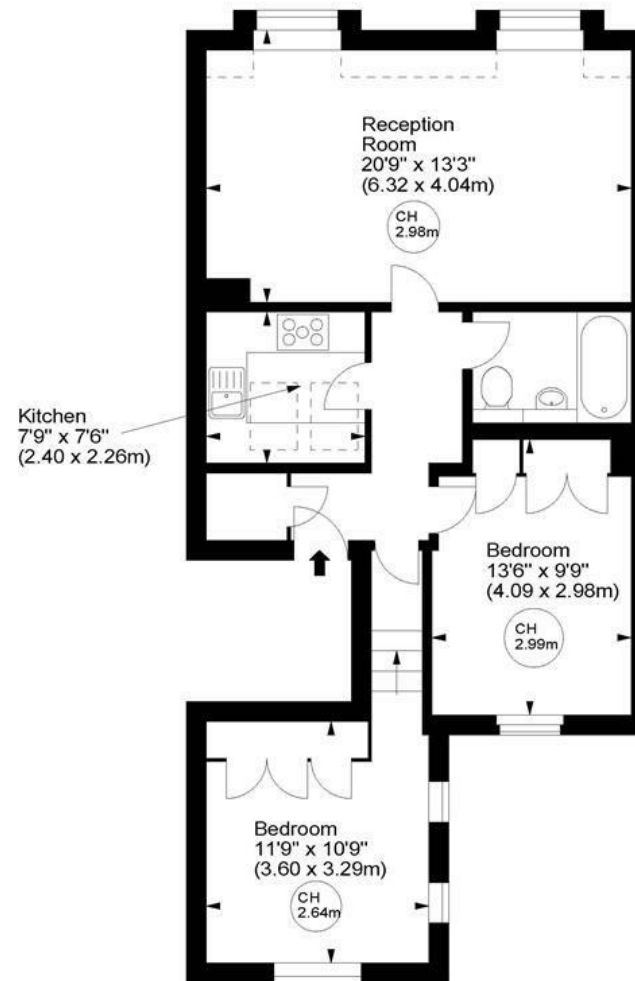
**Local Authority:** RBKC

**Council Tax Band:** F + garden square supplement

## Gledhow Gardens, SW5

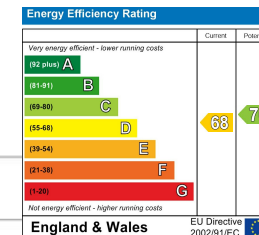


Approx. Gross Internal Area  
740 Sq Ft - 68.75 Sq M



Fourth Floor

For illustration purposes only. Not to scale.  
All measurements are taken and shown at floor level.  
www.r3photography.co.uk © Photography / Floor Plans / Lease Plans / EPCs



## FEATURES

- Approx. 740 sq ft / 68.75 sq m
- Fourth floor position
- Share of freehold
- Impressive three-metre ceiling heights
- Commanding views over Gledhow Gardens & Bina Gardens West
- Exclusive access to two private communal garden squares
- Contemporary marble kitchen with roof lights
- Bright dual-aspect living accommodation
- Two generous double bedrooms
- Quiet tree-lined address moments from South Kensington

**WHITE**  
ESTATES

0207 370 4343

[www.white-estates.co.uk](http://www.white-estates.co.uk)

[sk@white-estates.co.uk](mailto:sk@white-estates.co.uk)

176 Old Brompton Road, London, SW5 0BA